

Icon



SRI RAGHAVENDRA

# ALPHABET

Aa Bb Cc

Dd Ee Ff

Gg Hh Ii

Jj Kk Ll

Mm Nn Oo

Pp Qq Rr

Ss Tt Uu

Vv Ww Xx

Yy Zz



apple



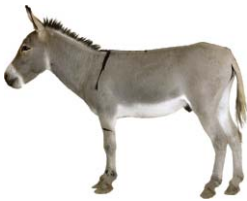
**A**PPLE

aeroplane



**A**EROPLANE

ass



**A**SS

axe

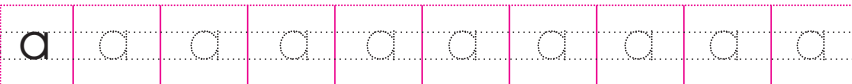


**A**XE

arm



**A**RM



## Vegetables



**Tomato**



**Brinjal**



**Carrot**



**Potato**



**Lady's Finger**



**Cauliflower**



**Bittergourd**



**Onion**



**Beetroot**



**Peas**



**Pumpkin**



**Cabbage**



**Ivy gourd**



**Ridge Gourd**



**Chillies**



**Drumstick**

## Fruits



**Apple**



**Mango**



**Watermelon**



**Grapes**



**Pomegranate**



**Banana**



**Orange**



**Custard Apple**



**Kiwi**



**Guava**



**Papaya**



**Pineapple**

**End of Preview.**

**Rest of the book can be read @**  
**<http://kinige.com/book/ABC>**

\* \* \*